

If you are taking measurements to place an order please follow this guide. If you have any questions please do not hesitate to contact us for assistance, as it is most important that your measurements are correct.

You require

- A fabric tape measure.
- A person to measure you.
- A well fitting shirt and trousers of the type you will wear under your waistcoat.
- A waistcoat or jacket

When taking the measurements

- Keep the tape measure comfortably snug, but not too tight.
- All measurements should be taken to the nearest centimetre or half inch.

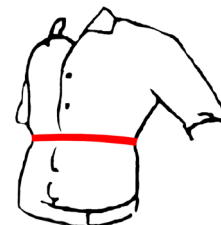
Chest

- Measure around the fullest part of the chest keeping the tape measure level.
- Stand normally, do not inflate your chest.
- Ensure you can fit an index finger between the tape and your chest.



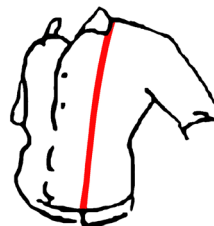
Waist

- Measure around your stomach at the level of the bottom of the ribcage. Allow some room for breathing movement.
- As a guide this should be the widest part of your middle.



Front Length

- Measure in a straight line from the shoulder seam straight down to the lowest point where you wish the waistcoat to finish.
- As a guide this is likely to be at least 2" lower than your trouser waistband.



Back length

- Measure from the base of your collar in the centre back of your neck following the contour of your back down to the waist where you want the waistcoat to end.
- Be aware that the waistcoat will be cut lower to the front where it slopes to its points.
- Err on the generous side with this measurement.



Neck Measurement

- Measure as for shirt collar sizing.

Half back measurement

- Wearing your jacket or waistcoat, measure from a point 4" down the centre back seam from the base of the collar across to the edge of the waistcoat.

